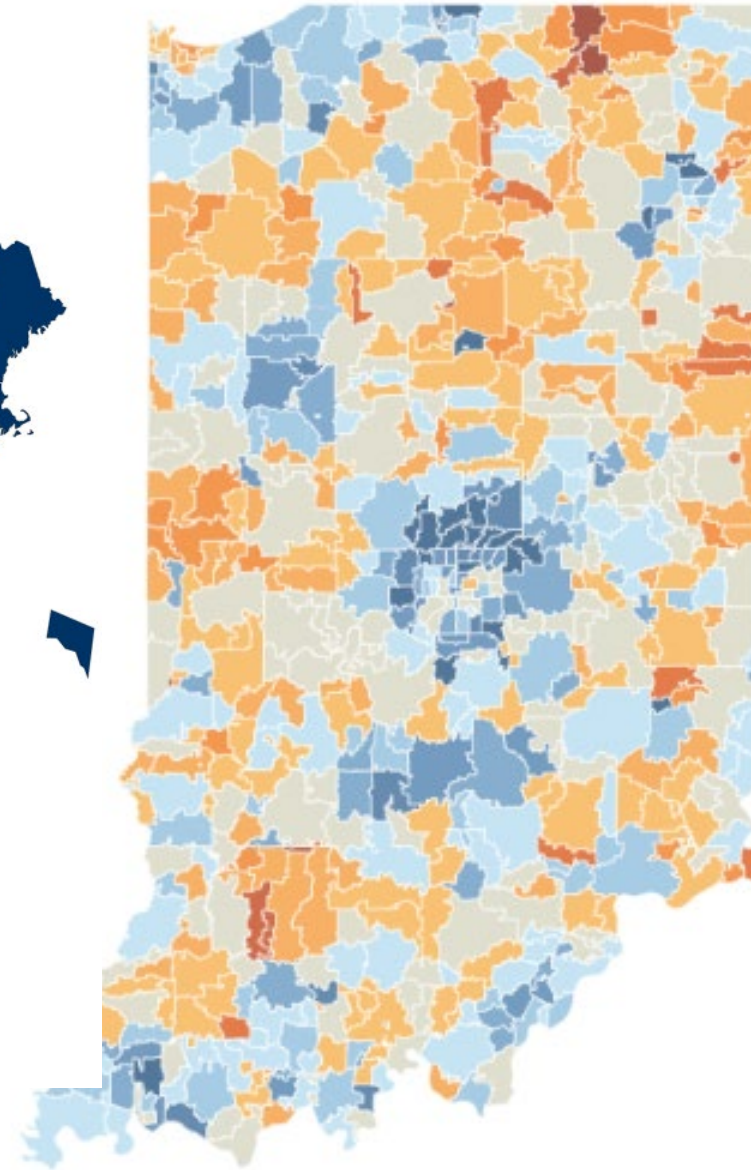
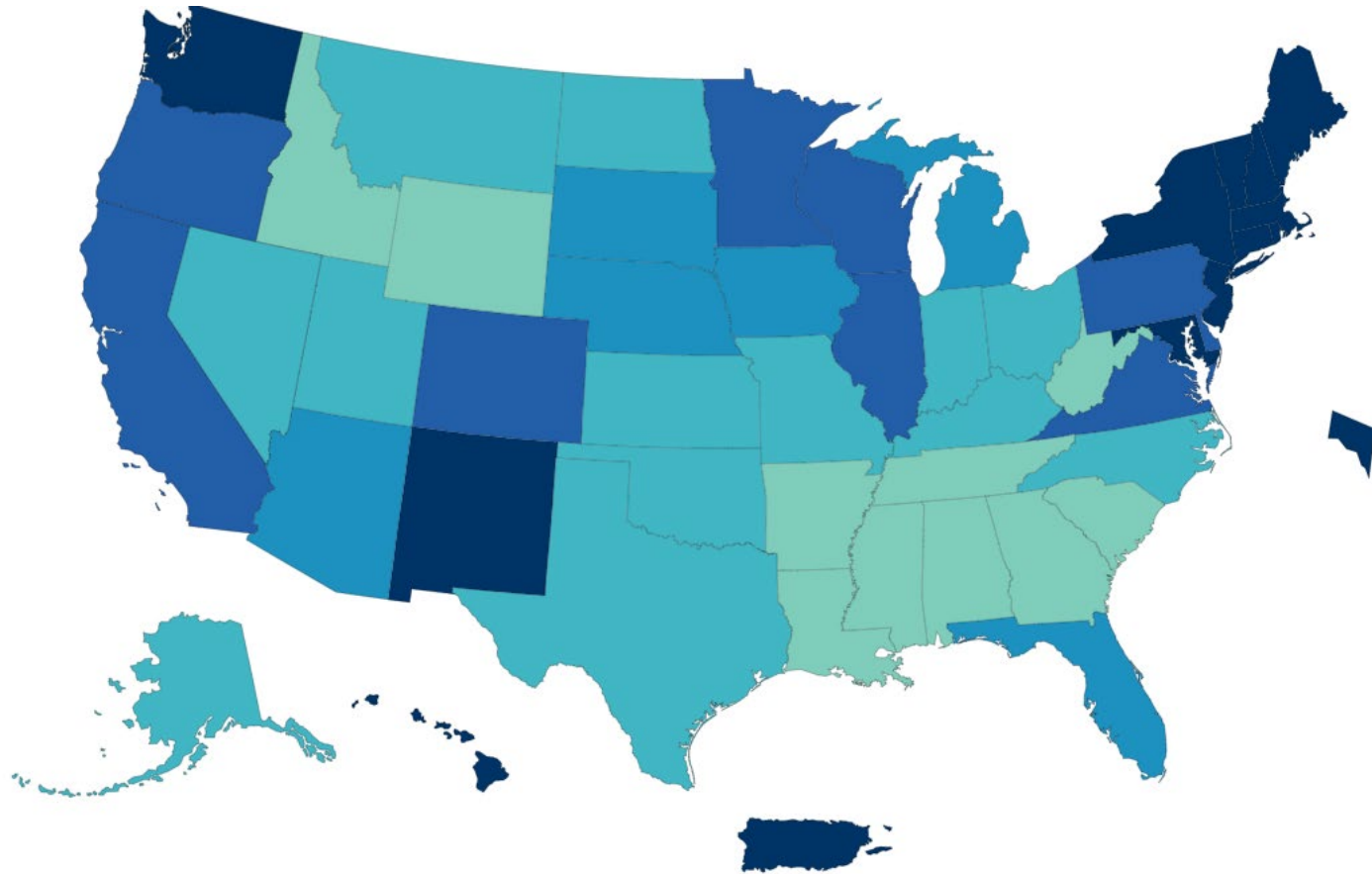


Vaccinated Map



Percent of Population (12+)

- 0% - 15%
- >15% - 20%
- >20% - 25%
- >25% - 30%
- >30% - 35%
- >35% - 40%
- >40% - 45%
- >45% - 50%
- >50% - 55%
- >55% - 60%
- >60% - 65%
- >65% - 70%
- >70%



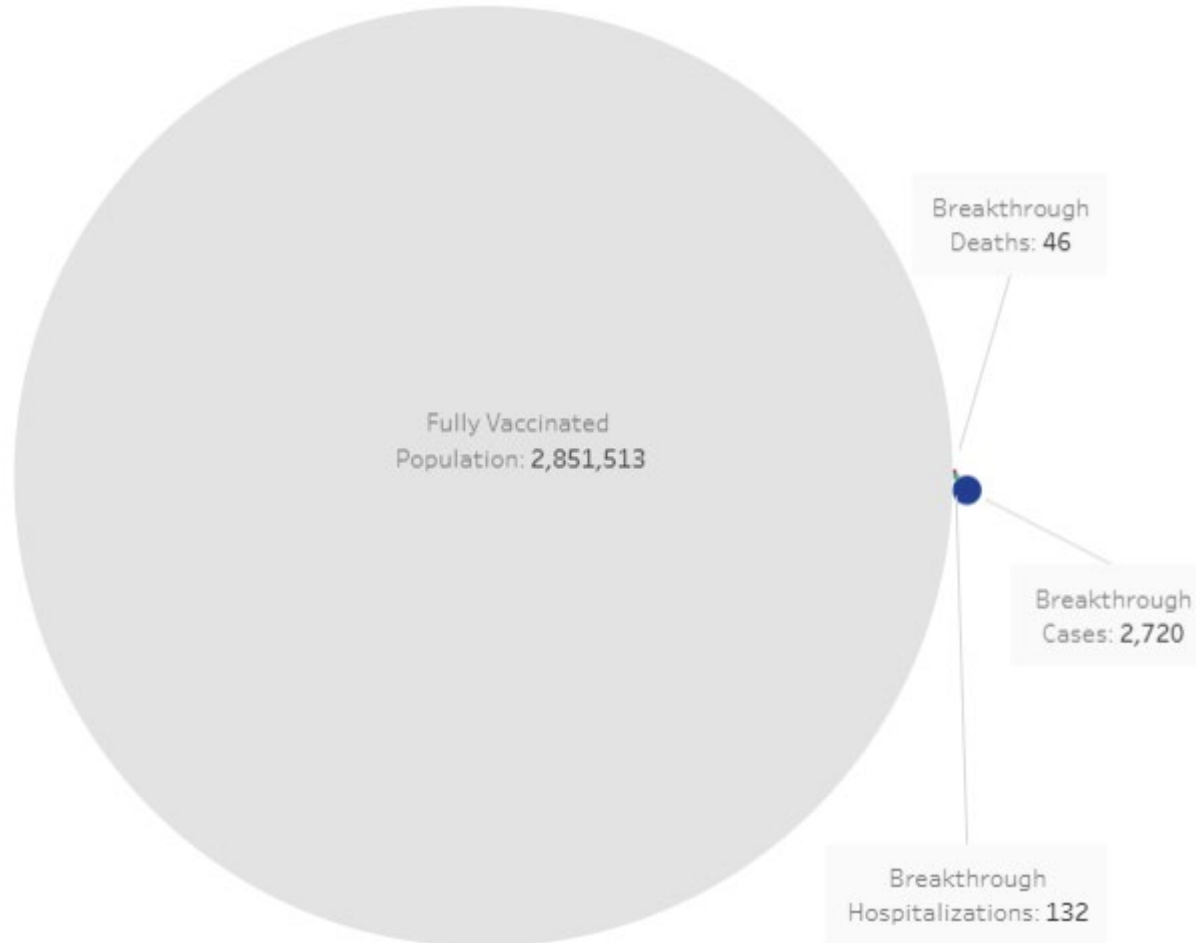
Indiana
Department
of
Health

Positive Cases

New Cases (7-Day Average)
Data As Of July 22, 2021



Cases in Vaccinated vs Unvaccinated



Unvaccinated Hoosiers make up 98% of COVID-19 cases in Indiana (since January 18)

FULLY vaccinated – 1 in 18,795 – Your odds of being hospitalized after being fully immunized (Jan 18-now)

NOT vaccinated – 1 in 237 – Your odds of being hospitalized without vaccination (Jan 18-now)

Other Reminders

- West Nile virus
 - One mosquito pool collected in Vigo County has tested positive for West Nile virus
 - Healthcare providers should consider arboviral disease in patients during mosquito season (May–October in Indiana)
 - Arboviral diseases are immediately reportable to the local health department of the county where the patient resides
- Varicella (chickenpox)
 - IDOH has increased reports of varicella, including suspected clusters of varicella in local schools and childcare facilities
 - Cases of varicella must be reported to the IDOH or LHD within 72 hours of diagnosis.
- Respiratory Syncytial Virus (RSV)
 - Causes respiratory illness mainly in children under 4 years of age but can infect people of all ages
 - Not a reportable disease