



ELEVATUS
ARCHITECTURE

111 E. Wayne Street, Suite 555, Fort Wayne, IN 46802
360.424.9500
ElevatusArchitecture.com

CONFIDENTIAL COPYRIGHT 2019
ELEVATUS ARCHITECTURE
ALL RIGHTS RESERVED. THIS DOCUMENT IS THE PROPERTY OF ELEVATUS ARCHITECTURE AND IS NOT TO BE REPRODUCED, COPIED, OR TRANSMITTED IN ANY FORM OR BY ANY MEANS, ELECTRONIC OR MECHANICAL, INCLUDING PHOTOCOPYING, RECORDING, OR BY ANY INFORMATION STORAGE AND RETRIEVAL SYSTEM. ANY UNAUTHORIZED REPRODUCTION OR USE OF THIS DOCUMENT IS STRICTLY PROHIBITED. ELEVATUS ARCHITECTURE SHALL BE RESPONSIBLE FOR THE ACCURACY OF THE INFORMATION CONTAINED HEREIN. THE USER OF THIS DOCUMENT SHALL BE RESPONSIBLE FOR THE ACCURACY OF THE INFORMATION CONTAINED HEREIN. THE USER OF THIS DOCUMENT SHALL BE RESPONSIBLE FOR THE ACCURACY OF THE INFORMATION CONTAINED HEREIN.

SEAL

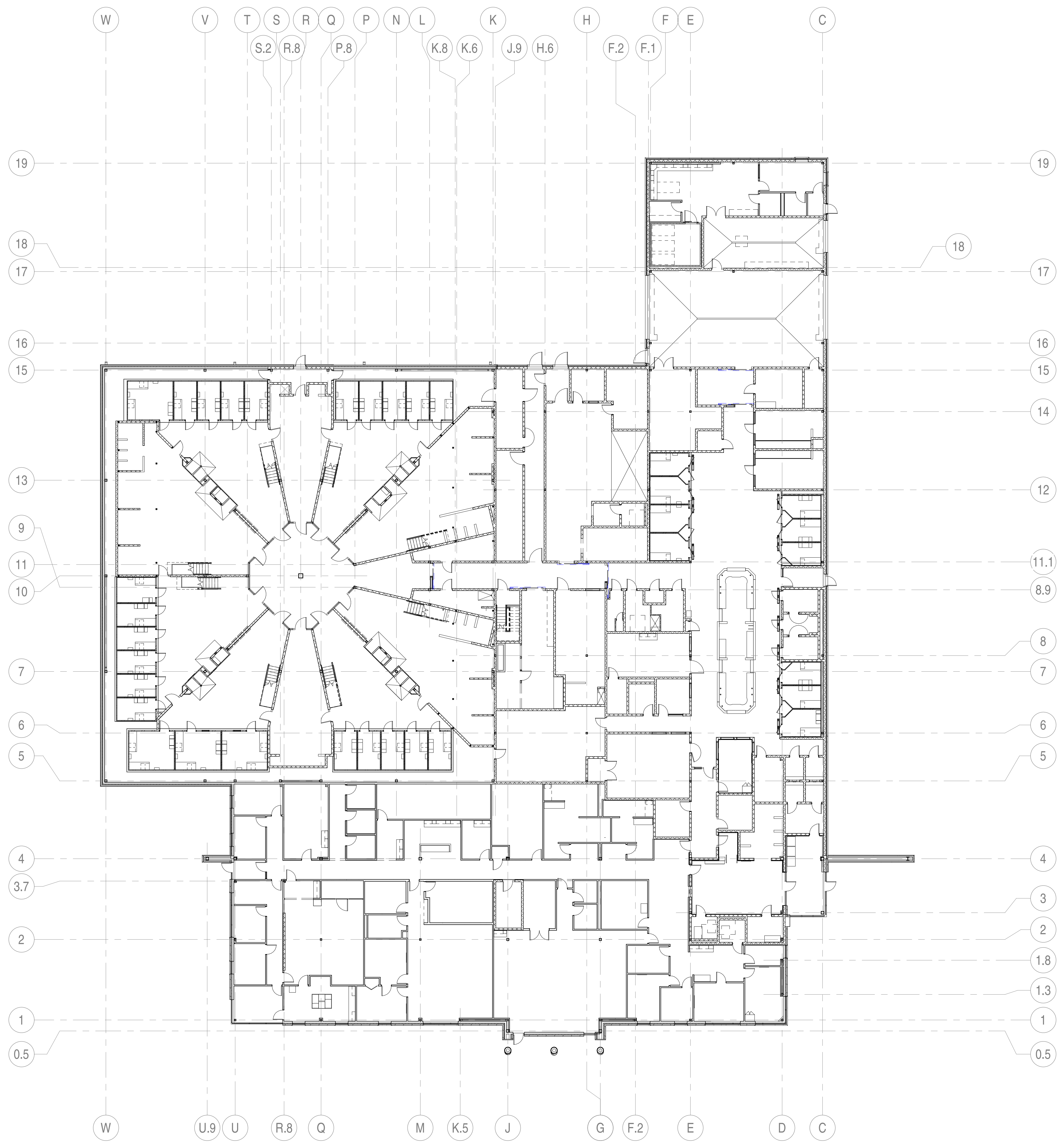
Fulton County Sheriff's Office & Detention Center
2006 Sweetgum Rd.
Rochester, IN 46975

REVISIONS		
NO.	DESCRIPTION	DATE
1.8		
1.3		
1		

PROJECT NO. 1801306
ISSUE DATE 12/18/2019
SUBMITTAL For Construction Set

OVERALL FLOOR PLAN

A-000



PLAN NORTH
1 Floor Plan
1/16" = 1'-0"

2/13/2020 10:58:10 AM
C:\Users\jgordon\OneDrive\Documents\20201218_105810_Fulton County Sheriff's Office Detention Center.dwg